

Greater Vallejo Recreation District

GVRD promotes wellness and healthy lifestyles
by providing safe parks and innovative and fun
recreation programs for all residents.

BOARD OF DIRECTORS

Rizal Aliga
Robert Briseño
Stacey Kennington
Wendell Quigley

GENERAL MANAGER

Gabe Lanusse

In compliance with the Americans with Disabilities Act, Special assistance for participating in this meeting can be obtained by contacting the District Office at 707-648-4604. A 48-hour notification would enable the District to make reasonable accommodations to ensure accessibility to this meeting. (28 CFR 35.102-35.104 ADA Title II).

Facility and Development Committee Agenda

Directors: Aliga and Quigley

Wednesday July 19, 2023

4:00 p.m.

Administrative Office – Board Room

401 Amador Street

This committee shall study and recommend acquisitions of real property and the type of facilities that should be planned for new acquisitions, all joint planning and development programs for district facilities, including any additional facility needs, and the development of present parks. This committee shall review and make recommendations for facilities and/or developments. This committee shall review matters related to the engineering and operation of facilities and short and long-range capital improvement plans.

1. Public Comment

Members of the public may speak on any item within the jurisdiction of the Committee. Each speaker is limited to 3 minutes and a spokesperson for an organization is limited to 5 minutes.

2. Dan Foley Artificial Field Replacement

3. McManus Field Design

4. City Park Concept Designs

5. Wilson Park Design

6. Grant Mahony Park Concept Designs

7. Franklin Middle School Site

8. Cunningham Aquatic Complex Restroom Improvements

9. 395/401 Amador Street Upgrades

10. Lake Dalwigk Park Improvements

11. Hanns Park ADA/Restroom Upgrades

U14 AND UP
SOCCER FIELD (70 X
110 YRD)

PORTABLE HOMERUN
FENCING

EXISTING SPORTS FIELD
LIGHTING, REPLACE
FIXTURES

2 STATION ON FIELD
BULLPEN

NEW FOUL LINE FENCING
WITH 30' PROTECTIVE
NETTING

NEW NATURAL TURF
BASEBALL FIELD WITH
NEW DRAINAGE AND
IRRIGATION

NEW ADA WALKWAY
FROM PARKING STALLS

NEW ACCESSIBLE RAMP
FROM UPPER FIELD,
RESTROOM, PLAY AREA

EXISTING GRAND STAND TO REMAIN.
SEATING PLANKS TO BE REPLACED WITH
NEW ALUMINUM PLANKS

NEW AREA FOR ADA SEATING

2 STATION OFF FIELD
BULLPEN

NEW 30FT TALL
NETTED BACKSTOP

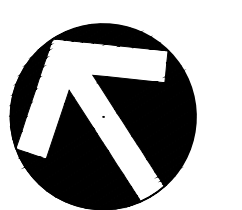
NEW FOUL LINE FENCING

NEW 43' X 10 DUGOUT

REPLACE EXISTING
SYNTHETIC TURF
FIELD

U14 AND UP
SOCCER FIELD (70 X
110 YRD)

SOFTBALL INFIELD



NORTH



DAN FOLEY PARK FACILITY IMPROVEMENTS - OPTION 1
DAN FOLEY PARK, VALLEJO
GREATER VALLEJO RECREATION DISTRICT



VERDE DESIGN

March 21, 2023

LANDSCAPE ARCHITECTURE
CIVIL ENGINEERING
SPORT PLANNING & DESIGN
2455 The Alameda, Ste. 200
Santa Clara, CA 95050
tel: 408.985.7200
fax: 408.985.7260
www.verdedesigninc.com

U14 AND UP
SOCCER FIELD (70 X
110 YRD)

PORTABLE HOMERUN
FENCING

EXISTING SPORTS FIELD
LIGHTING, REPLACE
FIXTURES

2 STATION OFF FIELD
BULLPEN

NEW FOUL LINE FENCING
WITH 30' PROTECTIVE
NETTING

NEW NATURAL TURF
BASEBALL FIELD WITH
NEW DRAINAGE AND
IRRIGATION

NEW ADA WALKWAY
FROM PARKING STALLS

NEW 30FT TALL
NETTED BACKSTOP

EXISTING GRAND STAND TO REMAIN.
SEATING PLANKS TO BE REPLACED WITH
NEW ALUMINUM PLANKS

NEW AREA FOR ADA SEATING

2 STATION OFF FIELD
BULLPEN

NEW FOUL LINE FENCING

NEW 43' X 10 DUGOUT

NEW ACCESSIBLE RAMP
FROM UPPER FIELD,
RESTROOM, PLAY AREA

REPLACE EXISTING
SYNTHETIC TURF
FIELD

U14 AND UP
SOCCER FIELD (70 X
110 YRD)

SOFTBALL INFIELD



NORTH

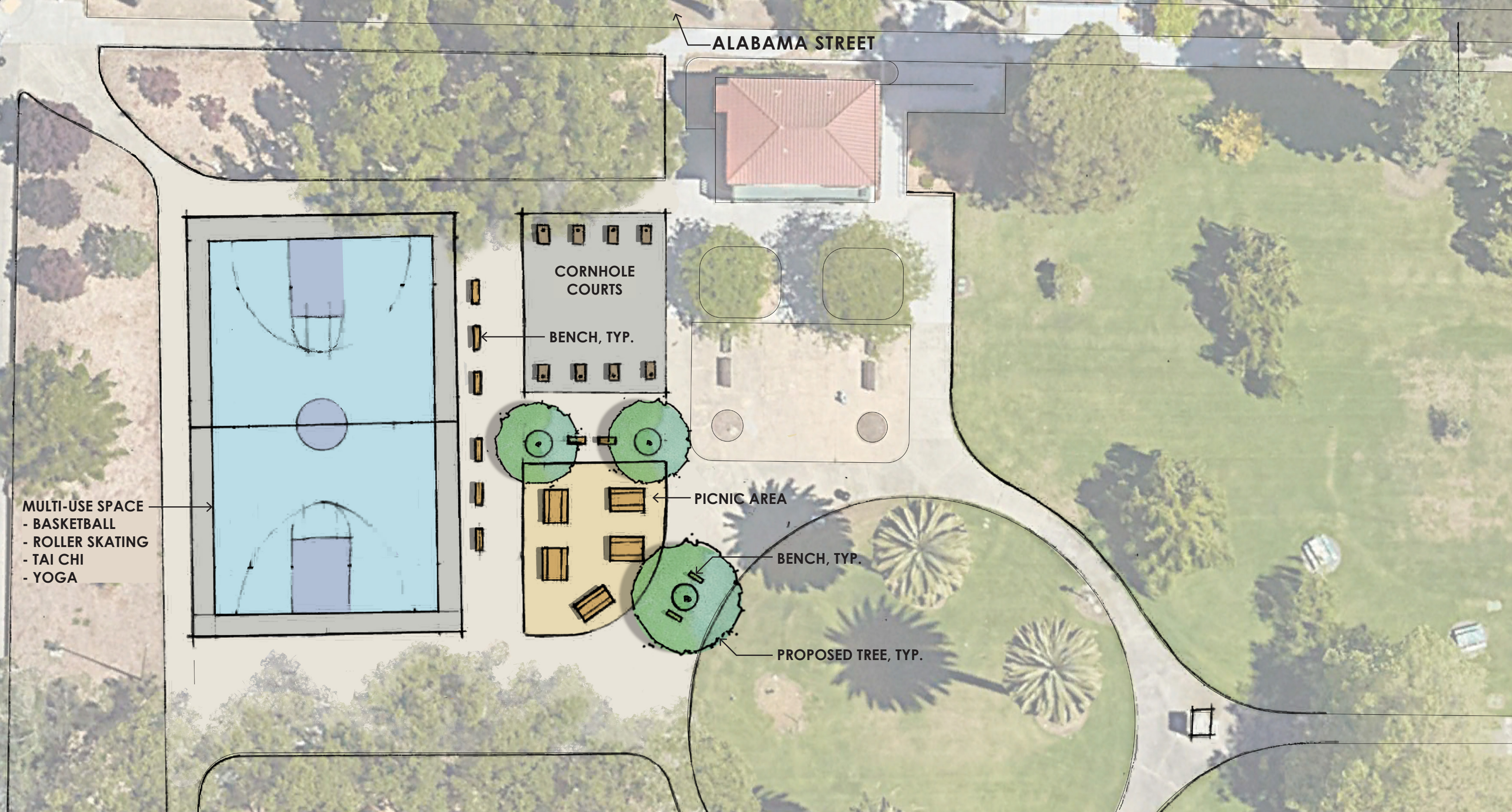


DAN FOLEY PARK FACILITY IMPROVEMENTS - OPTION 2
DAN FOLEY PARK, VALLEJO
GREATER VALLEJO RECREATION DISTRICT



LANDSCAPE ARCHITECTURE
CIVIL ENGINEERING
SPORT PLANNING & DESIGN
2455 The Alameda, Ste. 200
Santa Clara, CA 95050
tel: 408.985.7200
fax: 408.985.7260
www.verdedesigninc.com

March 21, 2023



CITY PARK
CONCEPT PLAN - OPTION A
 VALLEJO, CA.



SCALE 1" = 20'
 JUNE 2, 2023



CITY PARK
CONCEPT PLAN - OPTION B1
 VALLEJO, CA.



SCALE 1" = 20'
 JUNE 2, 2023

EXISTING SPORTS FIELD LIGHTING, REPLACE FIXTURES

NEW NATURAL TURF BASEBALL FIELD WITH NEW DRAINAGE AND IRRIGATION

3 STATION BULLPEN/ BATTING CAGE (COVERED)

NEW SYNTHETIC TURF FIELD

U14 AND UP SOCCER FIELD (75 X 120 YRD)

U12 SOCCER FIELD (50 X 75 YRD)

U8 SOCCER FIELD (25 X 35 YRD)

ADA IMPROVEMENT FOR ACCESS FROM ACCESSIBLE PARKING STALLS

NEW SPORTS FIELD LIGHTING

LITTLE LEAGUE FIELD

EXISTING BACKSTOP

SPECTATOR SEATING AREA

U8 SOCCER FIELD (25 X 35 YRD)

NEW SYNTHETIC TURF FIELD

U10 SOCCER FIELD (45 X 65 YRD)

WARM UP AREA

NEW BLEACHER SYSTEMS

NEW 30FT TALL NETTED BACKSTOP

EXISTING GRAND STAND TO REMAIN. SEATING PLANKS TO BE REPLACED WITH NEW ALUMINUM PLANS

EXISTING DUGOUTS TO REMAIN

NEW ELECTRICAL INFRASTRUCTURE

OFF FIELD DOUBLE STATION BULLPEN

NEW FOUL AREA FENCING WITH 30FT TALL NETTING, BOTH SIDES



0' 15' 30' 45' 90'

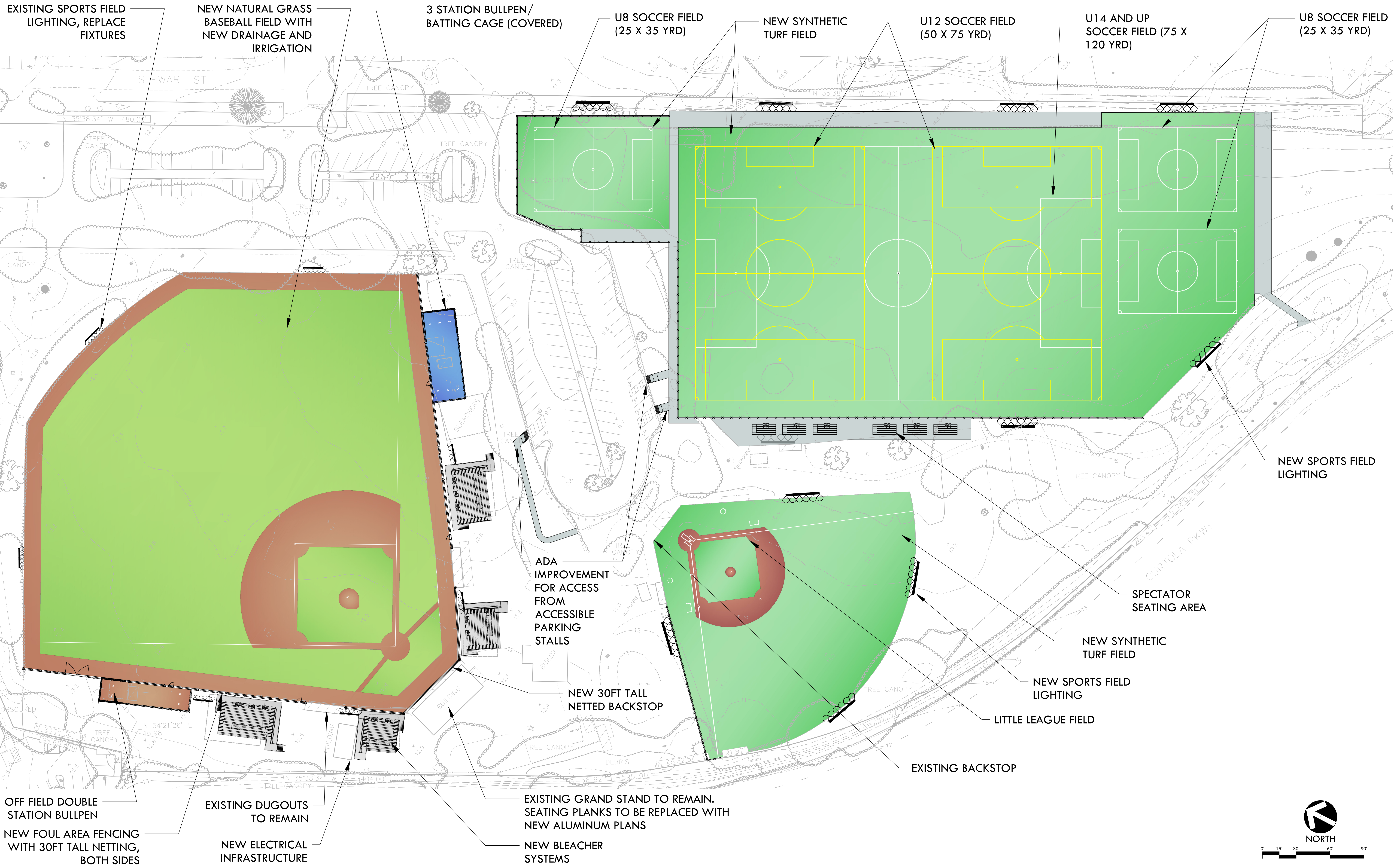


WILSON FACILITY IMPROVEMENTS - OPTION 1 WILSON PARK, VALLEJO GREATER VALLEJO RECREATION DISTRICT



LANDSCAPE ARCHITECTURE
CIVIL ENGINEERING
SPORT PLANNING & DESIGN
2455 The Alameda, Ste. 200
Santa Clara, CA 95050
tel: 408.985.7200
fax: 408.985.7260
www.verdedesigninc.com

March 10, 2023



WILSON FACILITY IMPROVEMENTS - OPTION 2
WILSON PARK, VALLEJO
GREATER VALLEJO RECREATION DISTRICT



LANDSCAPE ARCHITECTURE
 CIVIL ENGINEERING
 SPORT PLANNING & DESIGN
 2455 The Alameda, Ste. 200
 Santa Clara, CA 95050
 tel: 408.985.7200
 fax: 408.985.7260
 www.verdedesigninc.com

March 10, 2023

NEW FENCING



PLAY EQUIPMENT



RACE TRACK



CHECKER TABLES



ARKANSAS STREET (SU)

PRE-CAST CORN HOLE BOARDS



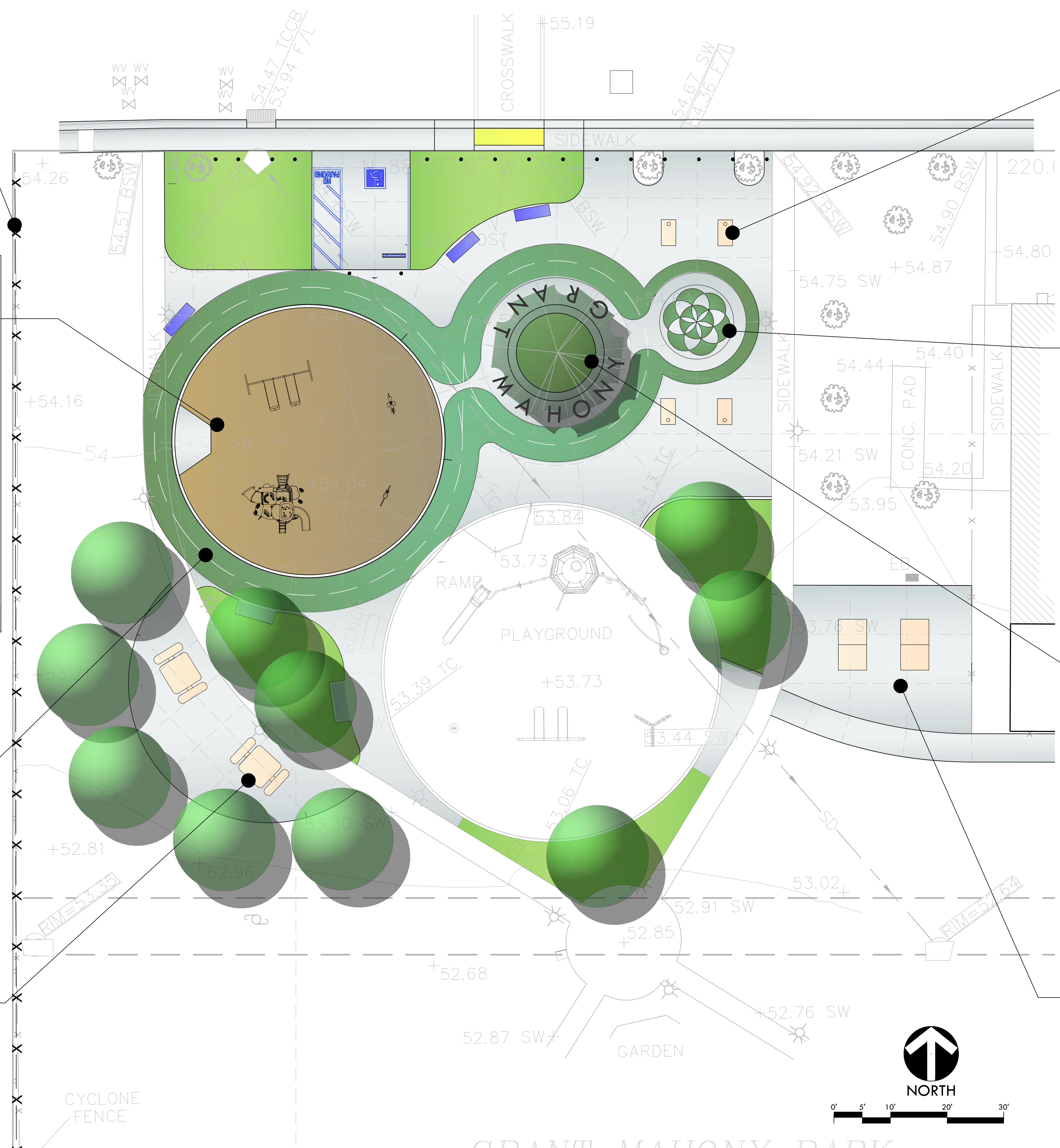
SEED OF LIFE LABYRINTH EXTENSION



SEAT WALL AND PLANTER



EXISTING PING PONG TABLES



0' 5' 10' 20' 30'



CONCEPTUAL DESIGN OPT #1
GRANT MAHONEY PARK, VALLEJO
GREATER VALLEJO RECREATION DISTRICT



LANDSCAPE ARCHITECTURE
CIVIL ENGINEERING
SPORT PLANNING & DESIGN
3358 Round Barn Blvd., Suite 200
Santa Rosa, CA 95403
tel: 707.800.4204
www.verdedesigninc.com

June 23, 2023



NEW FENCING



BENCHES AROUND TREES



PRE-CAST CONCRETE SEAT WALLS WITH WOODEN BENCHES

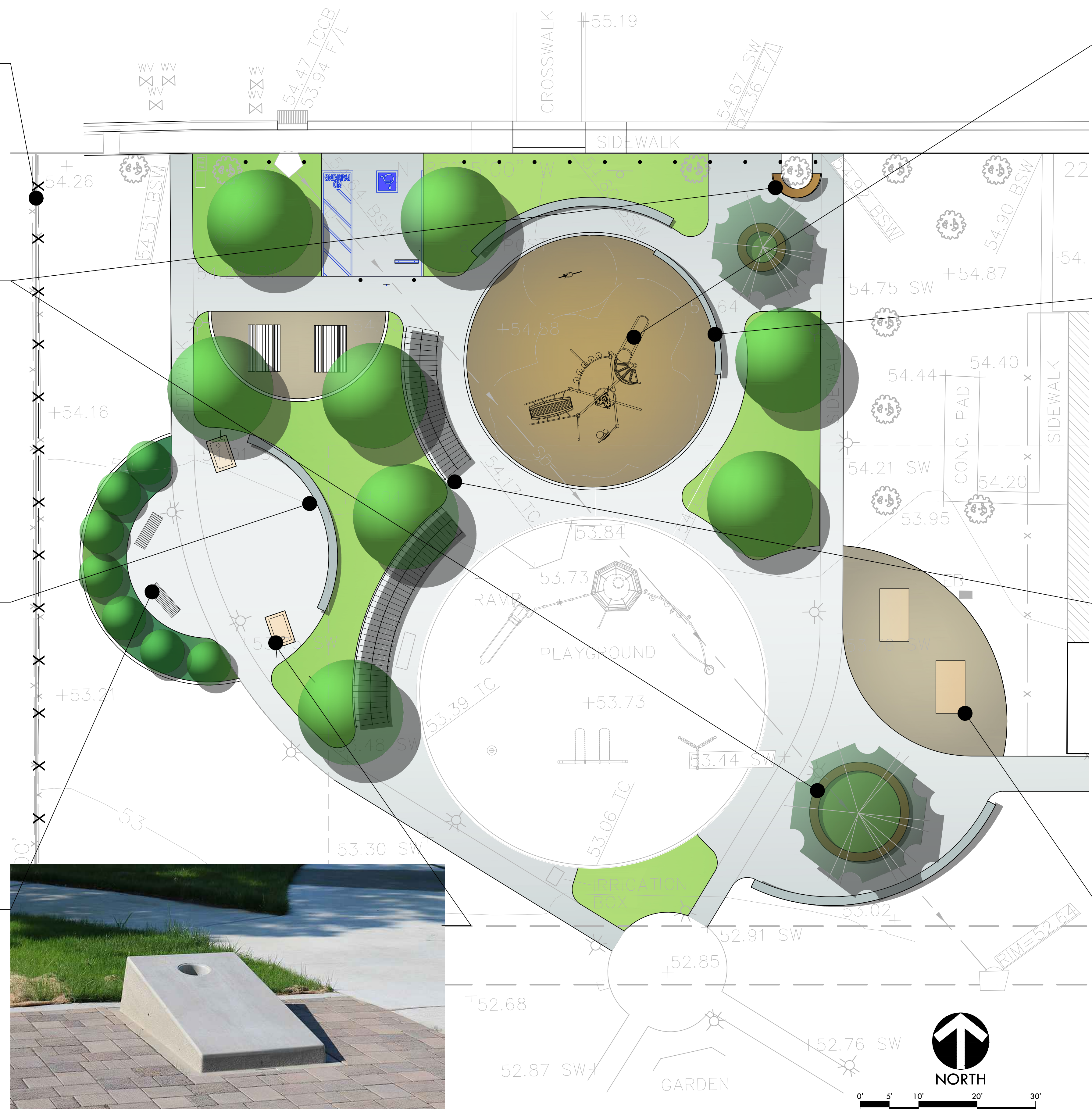


BENCH



PRE-CAST CORN HOLE BOARDS

ARKANSAS STREET (5)



PLAY EQUIPMENT



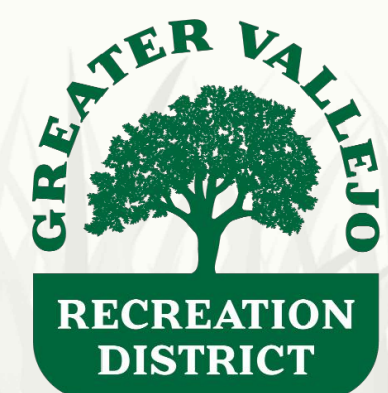
SECURITY WALL AT PLAYGROUND



PERGOLA/CANOPY WITH HAMMOCKS AND SWINGS



EXISTING PING PONG TABLES



CONCEPTUAL DESIGN OPT #2
GRANT MAHONEY PARK, VALLEJO
GREATER VALLEJO RECREATION DISTRICT



LANDSCAPE ARCHITECTURE
CIVIL ENGINEERING
SPORT PLANNING & DESIGN
3358 Round Barn Blvd., Suite 200
Santa Rosa, CA 95403
tel: 707.800.4204
www.verdedesigninc.com

June 23, 2023